

NarcoWipe[®] Kits



Nextteq's Complete Line of Law Enforcement Investigation Products

Products include:

Civil Defense Kits

Drug and Clandestine Lab Kits

Clan Lab Kit*

Narco AirClear[®] Kits

> **NarcoWipe[®] Kits**

Custom Industry Kits

Training/Certification Kits

Civil Defense-Detection Papers

Civil Defense-Detector Tubes

Highly Sensitive, Reliable, and Easy-to-Use Wipes for Drug and Clan Lab Testing of Trace Residue, Solids, Skin, and Liquids

NarcoWipe Kits are portable, self-contained systems for rapid on-the-spot detection and identification of trace concentrations of illicit drugs, precursors, controlled substances, and other chemicals. These chemicals can be detected in powder, crystal, tablet, capsule, oil, or solid form on surfaces and equipment, in containers, on clothes, or dissolved in liquids. NarcoWipes can also be used to test skin and hair.

Employing proprietary colorimetric chemical reagents, NarcoWipes create a predictable color change within a specified time interval when exposed to the Minimum Detection Limit (MDL) concentration or a greater concentration of the specified illicit drug, precursor, controlled substance, or other chemical. The color changes can be compared to a color standard incorporated in each kit.

If the NarcoWipe test is positive, there is a presumption that the suspected illicit drug, precursor, controlled substance, or other chemical is the substance identified by the test. A positive test result for a controlled substance is a legally acceptable confirmation of probable cause.

In addition to the detection and identification of illicit drugs, precursors, controlled substances and other chemicals, NarcoWipes can be used to do the following:

- a. Assist in the rapid field identification of clan lab/illicit drug manufacturing methods
- b. Confirm the effectiveness of cleaning and decontamination
- c. Provide supporting evidence of child endangerment
- d. Evaluate the effectiveness of Personal Protective Equipment (PPE) programs
- e. Confirm the adequacy of clan lab remediation

* Featuring Gastec Gas Sampling Pump and Detector Tubes. The Gastec Pump and Tube System is manufactured by the Gastec Corporation.

NarcoWipe® Kits

Highly Sensitive, Reliable, and Easy-to-Use Wipes for Drug and Clan Lab Testing of Trace Residue, Solids, Skin, and Liquids

BETTER TEST SENSITIVITY

Designed for increased sensitivity, NarcoWipes have low Minimum Detection Limits that meet or exceed many regulatory standards. Greater test sensitivity offers the potential for more arrests and better police work, improved clan lab screening and safety, and stronger, more convincing evidence of clan lab child endangerment.

Test sensitivity is one of the most critical factors in determining the effectiveness of any presumptive test or test for clan lab remediation. Unlike many competitors, Nextteq specifies and publishes the Minimum Detection Limit (MDL) for each of its NarcoWipe Kits. You don't have to worry if the test has the required sensitivity to meet your requirements: Nextteq specifies and publishes the sensitivity of each NarcoWipe test.

BETTER TEST SENSITIVITY

– MEANS DETECTION OF TRACE AMOUNTS OF DRUGS

NarcoWipes for cocaine and methamphetamine have a Minimum Detection Limit of fifty micrograms (50 µg) and five micrograms (5 µg), respectively. The Methamphetamine NarcoWipe has a drug detection limit that is two to twenty times lower than the drug detection limit specified by the National Institute of Justice (NIJ) Presumptive Test Standard (NIJ-0604.01 dated July 2000), depending upon the reagent used. The Cocaine NarcoWipe has a drug detection limit that is fifteen percent lower than the drug detection limit specified by the NIJ Presumptive Test Standard, depending upon the reagent used. The cocaine wipe is so sensitive that a positive presumptive test has been obtained by wiping the crack cocaine residue from a used crack pipe. Similar results have been obtained for Methamphetamine NarcoWipes. In a real-world arrest, law enforcement officers obtained positive presumptive test results for methamphetamine after wiping a suspect's car keys and the surface of the suspect's water bottle.

BETTER TEST SENSITIVITY

– MEANS FAST, LOW COST REMEDIATION TESTING

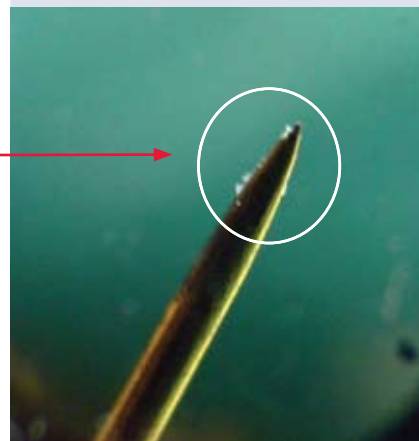
In addition to offering tests for clan lab precursors and other chemicals not offered by competitors, Nextteq's Methamphetamine NarcoWipe is three times more sensitive than the claimed sensitivity of the leading competitors' colorimetric methamphetamine wipe designed for remediation screening. Furthermore, composite sampling effectively increases sensitivity further and allows you to determine average area contamination for remediation as low as 0.5 micrograms (0.5 µg) or lower depending upon the number of samples taken. In addition, collecting ten composite samples with one NarcoWipe is more than 98% less expensive than the cost of using ten of the leading competitor's methamphetamine remediation immunoassay screening tests.

TEST RESULTS CONFIRM:

NarcoWipes Detect Trace Amounts of Substances That Competitors Miss

The Target Substance

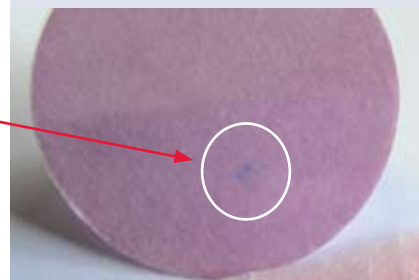
Trace Cocaine Residue Suspected On the Tip of a Pin



The Test Results

NarcoWipe Test Result: Yes

Blue Color Change Precisely and Clearly Indicates Presence of Cocaine.



Competitor* Test Result: No

No Color Change. No Indication of the Presence of Cocaine.



* Actual Test Result using NIK Public Safety 6500 Cocaine Wipe. September 2007.

UNIFORM WIPE COLLECTION SURFACE MEANS REPEATABLE, RELIABLE, AND VALID TEST RESULTS YOU CAN COUNT ON EVERY TIME

NarcoWipes are 99.97% effective in indicating a positive test result within the time specified for the color change when exposed to the Minimum Detection Limit (MDL) concentration or higher concentrations of the specified illicit drug, precursor, controlled substance, or other chemical.

Manufactured to exacting specifications, NarcoWipes offer a consistent and uniform wipe collection surface.

The wipe collection surface provides a reliable, repeatable, bias-free, and valid test result when properly used by different test operators. A unique handle and clear plastic protective shield provide a convenient, contamination-free method to hold the wipe. The handle also provides the ability to apply consistent wiping pressure over the wipe's uniform collection surface.

With NarcoWipes' uniform collection surface, you avoid the test operator bias and unreliable and unrepeatable test results that can plague unstructured gauze pad-type wipe tests. Gauze pad-type wipe tests may be laid entirely flat or wadded up by different test operators into one-of-a-kind size collection surfaces. These non-uniform, differently sized wipe collection surfaces have the potential for changing the intensity of the visible color change and test sensitivity, as well as overall test results. The lack of an assured uniform collection surface makes gauze pad-type tests exposed to identical drug or chemical samples potentially unreliable, non-repeatable, and therefore, possibly unsupportable in a court of law when vigorously challenged.

REASONABLE SHELF LIFE ENSURES TESTS MEET TEST OBJECTIVE

How valuable is a presumptive test that lasts a long time but cannot detect the controlled substance in low concentrations or in liquids?

Designed for extreme sensitivity and to detect unknown substances on surfaces or dissolved in liquids, NarcoWipes have an unrefrigerated shelf life of six months to two years, depending upon the application. There are some competitors with presumptive tests that offer a longer shelf life. However, these competitor presumptive tests typically lack the sensitivity to detect trace concentrations of drug residue and are not recommended by their manufacturers for detection of drugs in liquids.

There are always tradeoffs in the benefits offered by any test. In this case, your options are either a competitor's ampoule and bag type presumptive test that lasts an excessively long time, lacks sensitivity, and cannot be used to test liquids or a Nextteq presumptive test that has a reasonable shelf life and can detect trace concentrations on surfaces and in liquids.

YOU WON'T CUT YOURSELF WHEN YOU BREAK AN AMPOULE

To further extend the shelf life of some NarcoWipe Kit applications, precise amounts of premixed developing solution reagents are hermetically sealed in small glass ampoules. Each glass ampoule is encased in a strong, corrosion-resistant polypropylene mesh screen that prevents glass shards from penetrating the mesh screen and cutting your fingers.

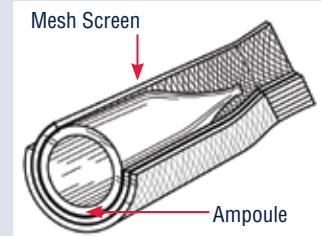
With Nextteq NarcoWipes, you avoid the cut fingers and direct exposure to chemical reagents that can occur when you break ampoules used in the old-fashioned multi-ampoule and bag presumptive tests.

REDUCED RISK OF CROSS CONTAMINATION AND GREATER OFFICER SAFETY

Designed to prevent cross contamination and to provide greater officer protection and safety, NarcoWipes incorporate a separate plastic handle attached to the wipe so you never have to touch the collection media. A clear plastic barrier over the collection media additionally shields you from contaminants and reagents.

In addition, since the NarcoWipe doesn't require a spoon or similar loading tool, you avoid the problem of cross contamination from using the same loading tool to load different tests or the issue of using a potentially contaminated personal item such as a pen, credit card, or keys to load a test when the loading tool is misplaced. Furthermore, because no loading device is required, you avoid errors from overload, a common problem with old-fashioned multi-ampoule and bag presumptive tests.

Extra Safety Precautions Protect You from Broken Glass



Cross-section of ampoule encased in protective mesh screen

Dirty surfaces are not a problem for this rugged wipe; it was designed for field use.



NarcoWipes' reverse-side, top-down viewing design ensures the color change is clearly visible without interference from dirt, grease, grime, or other surface contaminants that may mask or distort the color change on the collection media surface.

NarcoWipe® Kits

Highly Sensitive, Reliable, and Easy-to-Use Wipes for Drug and Clan Lab Testing of Trace Residue, Solids, Skin, and Liquids

Choose a Specific Application, One of our Deluxe Kits, or Build Your Own Custom Field Kit.

- Methamphetamine Presumptive Test*
- Cocaine Presumptive Test*
- Amphetamine/Methamphetamine
- Lead
- Mercury
- Nickel
- Iodine
- Red Phosphorus
- Acid/Base (not pictured) PN 20300000
- Methamphetamine (not pictured) PN 20350000

Accessories and Related Items



VariTem - an adjustable template for defining various configurations of surface area up to 10 cm x 10 cm



Deluxe Narco AirClear Kit - a kit for simultaneously measuring clan lab gases and vapors



Clandestine Lab Kit - a kit for individually analyzing clan lab gases and vapors



Methamphetamine Presumptive Test
PN 20380000



Cocaine Presumptive Test
PN 20400000



Amphetamine/Methamphetamine
PN 20310000



Lead
PN 20330000



Mercury
PN 20340000



Nickel
PN 20360000



Iodine
PN 20320000



Red Phosphorus
PN 20376000

Accessory Kits are available for dermal sampling and liquid sampling components.

* All-in-one Presumptive Test Kits include Dermal Sampling Swabs and Liquid Sampling Pipettes.



IF THE COLORIMETRIC TEST DOESN'T SPECIFY THE TIME INTERVAL FOR FINAL COLOR DEVELOPMENT, IT IS NOT A VALID PRESUMPTIVE TEST NOR A BASIS FOR PROBABLE CAUSE

Each Nextteq NarcoWipe specifies the “Final Color,” the time interval for final color development, and provides a Munsell-based color standard in each kit to compare with the test’s Final Color. Colorimetric tests that do not specify the time interval for development of the Final Color do not meet the generally accepted scientific and legal requirements that a valid test be objective, unbiased, reliable, and repeatable. If no time interval for development of the Final Color is specified, test results can be biased and false negative test results can be generated by either the test operator checking for the Final Color development too early, before the Final Color has had time to develop, or too late after the Final Color has developed and subsequently faded. The lack of a specified time for the formation of the Final Color means the test is subjective, not repeatable, and not valid because different test results can be obtained when identical drug samples are tested by different law enforcement personnel.

Color Standards at (1) Minimum Detection Limit, (2) High Concentration, and (3) No Reaction, Ensure NarcoWipe Results are Objective, Unbiased, Reliable, and Repeatable.



- (1) Minimum Detection Limit (MDL)
 - (2) High Concentration (e.g. 4 Times MDL Color Change)
 - (3) No Reaction
- Meth NarcoWipe Development Bag with Munsell-Based Color Standard

Old fashioned, multi-ampoule and bag presumptive tests develop a sequence of very rapid color changes prior to developing the Final Color. The time interval for the development of each of these multiple color changes, as well as the Final Color, is often not defined or is defined in non-specific terms for color development, such as “flash color change.” The Final Color for these different drug tests may be identical (i.e. brown). In order to identify the detected drug, the test operator often has to recall the rapid color change, as well as the sequence of each color change, prior to development of the Final Color to be able to determine if the test results are positive.

With NarcoWipes, you don’t have to keep your eye on the test every second. You just follow the precise, step-by-step directions, wait the time interval, and check for the Final Color. You avoid confusion and potential errors from attempting to view and recall the sequence of rapid color changes in potentially high stress situations.

In addition, colorimetric tests that fail to specify a time interval for development of the Final Color do not meet the National Institute of Justice presumptive test requirements as set forth in NIJ Standard 0604.01. The NIJ Standard, Article 4, Requirements, Section 4.6 states:

“Each reagent in the kit shall produce the color or colors specified by the manufacturer in the form of color samples...performed in accordance with paragraph 5.2, “Test Color” at the drug detection limit specified in table II.”

NIJ Standard, Article 5, Test Methods, Section 5.2 goes on to state:

“Compare the color or colors produced **within the specified time limits** to those provided by the manufacturer in accordance with Section 4.5 and determine whether the colors are essentially the same.” (Emphasis added.)

Simply stated, the presumptive test when exposed to a specified concentration of the target drug should produce a Final Color that matches the color sample provided by the manufacturer within the time specified.

Failure to specify the time interval for Final Color development could result in one of the following situations:

- a. A court determining the test is subjective, the test does not meet the standard, and the results are not a presumptive test result.
- b. A court rejecting the test as a basis for probable cause.

With NarcoWipes, you know exactly when to check for the development of the Final Color, ensuring valid, reliable, and repeatable presumptive test results.

Deluxe NarcoWipe® Kits

NarcoWipe Kits are intrinsically safe, portable, and include everything you need for testing.

INDIVIDUAL AND DELUXE KITS AVAILABLE

Choose from either individual NarcoWipe Kits that contain all the required supplies to conduct tests for the target substance or Deluxe NarcoWipe Kits that contain a collection of individual NarcoWipe Kits specific to a type of meth lab and/or cook method. A comprehensive Deluxe NarcoWipe Kit is also available to analyze generic meth labs regardless of the cook method.

Each Deluxe Kit is housed in a waterproof and corrosion-resistant Pelican™ case, providing rugged durability.

For maximum versatility, you can also create custom kits. The “building block” design lets you purchase just the individual kits you need to meet your unique requirements.

Deluxe NarcoWipe Kit PN 20002000

Contents: 20 tests of each of the following: Acid/Base, Amphetamine/Methamphetamine, Iodine, Lead, Mercury, Methamphetamine, Nickel, and Red Phosphorus.

Deluxe NarcoWipe Kit with Methamphetamine Presumptive Test PN 20004000

Contents: 20 tests of each of the following: Acid/Base, Amphetamine/Methamphetamine, Iodine, Lead, Mercury, Methamphetamine Presumptive Test, Nickel, and Red Phosphorus.

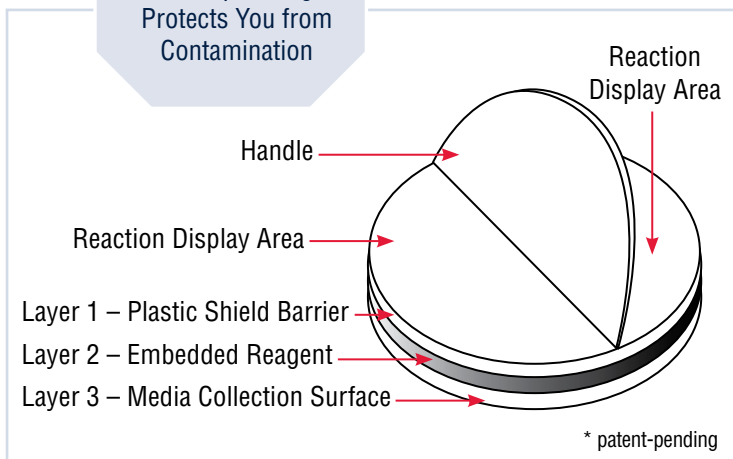
Deluxe NarcoWipe Kit for Red P/Iodine Labs PN 20003000

Contents: 40 tests of each of the following: Amphetamine/Methamphetamine, Iodine, and Methamphetamine. 20 tests of each of the following: Acid/Base, Nickel, and Red Phosphorus.



The Quick Reference Laminated Instruction Booklet can be easily removed to take to a specific location.

**NarcoWipe Design*
Protects You from
Contamination**



FAST, SIMPLE, AND EASY TO USE

Fast, simple, and easy to use by non-technical personnel, NarcoWipe Kits provide all the tools necessary for reliable, repeatable presumptive tests, cln lab remediation screening, and confirmation of decontamination.

Each NarcoWipe Kit contains a complete, detailed instruction manual that includes the following:

1. Easy to follow, step-by-step, precise operating instructions with illustrations.
2. Complete specifications including the following:
 - a. Minimum Detection Limit (MDL)
 - b. Time interval required for the development of the Final Color
 - c. List of known interferences and their effects, as well as the required concentration of the interferent necessary to cause an effect, if known
 - d. Photographs of the color change including the “no reaction color change,” the Minimum Detection Limit Final Color, and the Final Color at a concentration reasonably above the Minimum Detection Limit
3. Complete Material Safety Data Sheets (MSDS) with cautionary information concerning hazardous chemicals, best practices for handling hazardous materials, recommended personal protective equipment to use, if any, and recommended first aid and medical procedures in the event of exposure to hazardous chemicals.

With NarcoWipes, you avoid confusion and reduce operator error. You can count on error-free, accurate test results.

APPLYING THE DEVELOPING SOLUTION AFTER WIPING THE TESTING SURFACE ELIMINATES SAMPLE DILUTION AND DAMAGE TO WIPED SURFACES

With NarcoWipes, you don't have to worry about wipes soaking wet with chemical reagents damaging sensitive surfaces like documents and money or getting on your hands. NarcoWipes use only a few drops of wetting solution on the wipe prior to wiping the surface being tested. You can use NarcoWipes on vertical surfaces and sensitive objects without worrying about sample run-off. Only a few drops of developing solution are placed directly on the wipe so you do not have to worry about sample dilution. With NarcoWipes, you also avoid low readings from unreacted samples trapped in the corner of test bags, a common problem with old-fashioned multi-ampoule and bag presumptive tests.

Broad Temperature and Operating Ranges Mean NarcoWipes Can Be Used in Environments Where Competitive Tests Cannot Be Used

BUILT TOUGH

Built tough for field use, NarcoWipes are designed to successfully operate over a broad temperature and humidity operating range from 39°F to 140°F (4°C to 60°C) and from 10% Relative Humidity to 98% Relative Humidity. Furthermore, with a collection media comprised of dense polyester material, the NarcoWipe is rugged enough for smooth or rough surfaces. With NarcoWipes, you avoid the snags and tears common with the more fragile gauze pad-type wipes. Additionally, because of their rugged construction, NarcoWipes are ideal for composite sampling that requires multiple samples be taken with a single NarcoWipe.



Nextteq NarcoWipe® Specifications

PN	Test Name-Substance Detected and Number of Tests	CAS Number ¹	Market		Min. Detection Limit ²	Color Change From/To	Shelf Life ³ Refrigerated/ Room Temp.	Test Time Est. in minutes	Operating Temperature and Humidity	Kit Contents
			Law Enforcement	Remediation						
20300000	Acid/Base 20 Tests	N/A	X	X	Less Than 1 pH to Greater Than 12 pH ⁴	Match to Color Wheel on Box	18 mo/12 mo	5 seconds	39-140°F 10-98% RH	20 wipes, 20 sample bags, manual, and storage box
20310000	Amphetamine/Methamphetamine 20 Tests	51-63-8, 51-57-0	X	X	5 µg	Off-White to Bright Yellow	18 mo/6 mo	1	39-140°F 10-98% RH	20 wipes, 1 wetting solution, 2 developing solutions, 20 sample bags, manual, and storage box
20400000	Cocaine Presumptive Test 20 Tests	53-21-4	X	X	50 µg	Pink to Blue	24 mo/24 mo	1	39-140°F 10-98% RH	20 wipe assemblies (wipe, dermal swab, liquid sampling pipette, and sample bag), manual, and storage box
20320000	Iodine 20 Tests	7553-56-2	X	X	10 µg	White to Blue or Dark Blue	18 mo/12 mo	1	39-140°F 10-98% RH	20 wipes, 1 wetting solution, 20 sample bags, manual, and storage box
20330000	Lead (Elemental, Salts, and Oxides) 20 Tests	7439-92-1	X	X	5 µg	Off-White to Pink-Red or Violet	18 mo/12 mo	4	39-140°F 10-98% RH	20 wipes, 1 wetting solution, 1 developing solution, 20 sample bags, manual, and storage box
20340000	Mercury (Elemental, Salts, and Oxides) 20 Tests	7439-97-6	X	X	4 µg	Off-White to Peach	18 mo/6 mo	3	39-140°F 10-98% RH	20 wipes, 1 wetting solution, 20 sample bags, manual, and storage box
20350000	Methamphetamine 20 Tests	51-57-0	X	X	5 µg	Off-White to Grey Blue or Intense Blue	18 mo/12 mo	2	39-140°F 10-98% RH	20 wipes, 1 wetting solution, 1 developing solution, 20 developing bags w/ampoules, 20 sample bags, manual, and storage box
20380000	Methamphetamine Presumptive Test 20 Presumptive Tests	51-57-0	X		5 µg	Off-White to Grey Blue or Intense Blue	24 mo/12 mo	2	39-140°F 10-98% RH	20 wipe assemblies (wipe, wetting solution foil packet, developing bag w/ampoule, dermal swab, liquid sampling pipette, and sample bag), manual, and storage box
20360000	Nickel (Rainey, Salts, and Oxides) 20 Tests	7440-02-0	X	X	1 µg	Off-White to Pink-Red	18 mo/12 mo	2	39-140°F 10-98% RH	20 wipes, 1 wetting solution, 2 developing solutions, 20 sample bags, manual, and storage box
20376000	Red Phosphorus (Includes White/Yellow and Black Phosphorus) 10 Tests	7723-14-0, 51273-58-6, 7723-14-0	X	X	0.1 mg	Off-White to Dark Purple (Results Display on Scale)	18 mo/6 mo	15	39-140°F 10-98% RH	10 wipe assemblies (wipe, solution ampoule, and developing jar), 1 wetting solution, 1 ampoule opener, 10 sample bags, manual, and storage box
	Demos For Training									
20400001	Cocaine Presumptive Test Demo 1 Presumptive Test	53-21-4	X	X	50 µg	Pink to Blue	24 mo/24 mo	1	39-140°F 10-98% RH	1 wipe assembly (wipe, dermal swab, liquid sampling pipette, and sample bag)
20350010	Methamphetamine Demo 10 Tests	51-57-0	X	X	5 µg	Off-White to Grey Blue or Intense Blue	18 mo/12 mo	2	39-140°F 10-98% RH	10 wipes, 1 wetting solution, 1 developing solution, 10 developing bags w/developing solution ampoules, 10 sample bags, manual, and storage box
20380001	Methamphetamine Presumptive Test Demo 1 Presumptive Test	51-57-0	X		5 µg	Off-White to Grey Blue or Blue	24 mo/12 mo	2	39-140°F 10-98% RH	1 wipe assembly (wipe, dermal swab, liquid sampling pipette, and sample bag)

Key: CAS = Chemical Abstracts Service; µg = Micrograms; mg = Milligrams; N/A = Not Applicable; RH = Relative Humidity.

1. N/A is listed in the CAS column when the substance being detected is made up of several different unique chemicals and no single CAS number applies.

2. NarcoWipes are designed and tested following procedures in *Evaluation Guidelines, with Testing and Reporting Protocols, for OSHA On-Site Air and Surface Sampling Methods*. OSHA Salt Lake City Center, Program Support Division, Applied IH Chemistry Team, Salt Lake City, UT, April 2002.

3. Shelf Life is the shelf life from the date of shipment by Nextteq. NarcoWipes are packaged in hermetically sealed, metal foil, resealable pouches to prevent water, light, or air from degrading the wipe's shelf life. There are 10 wipes in each pouch unless otherwise noted.

4. Acid/Base measurement is noted as Detection Range instead of Minimum Detection Limit.



For more information: NEXTTEQ LLC

8406 Benjamin Rd. • Suite J • Tampa, FL 33634 USA • Tel: 813-249-5888 • Toll-free Tel: 877-312-2333
Fax: 813-249-0188 • Toll-free Fax: 877-312-2444 • Email: info@nextteq.com • www.nextteq.com