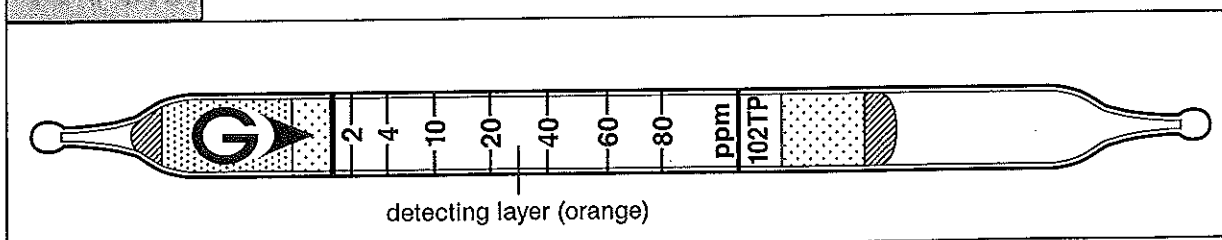
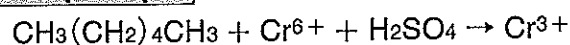


Detector tube

**Hexane**  $\text{CH}_3(\text{CH}_2)_4\text{CH}_3$ **No.102TP****Performance**

Measuring range	2 to 80 ppm
Sampling Rate	100 ml/min (1000 ml)
Correction factor	1
Sampling time	10 min

Detecting limit : 0.5 ppm (1000 ml)  
 Colour change : Orange → Dark green  
 Corrections for temperature : Unnecessary for 0 to 40°C  
 Corrections for humidity : Unnecessary for R.H. 0 to 90 %  
 Relative standard deviation : 10 % (for 2 to 20 ppm), 5 % (for 20 to 80 ppm)  
 Shelf life : 3 years

**Reaction principle****Possible coexisting substances and their interferences** (NOTE : Page 2-5)

Substance	Concentration	Interference	Changes colour by itself to
Sulphur dioxide	$\geq 10$ ppm	+	Dark green
Hydrogen sulphide	$\geq 10$ ppm	+	Dark green
Acetylene		+	Dark green
Alcohols		No	No
Esters, Ketones	$\geq 110$ ppm	+	Dark green
Organic solvents (C <sub>3</sub> or higher)		+	Dark green
Aromatic hydrocarbons	$\geq 35$ ppm	+	Dark green

**Calibration gas generation**

Diffusion tube method

TLV-TWA : 50 ppm

Explosive range : 1.1 to 7.5 %