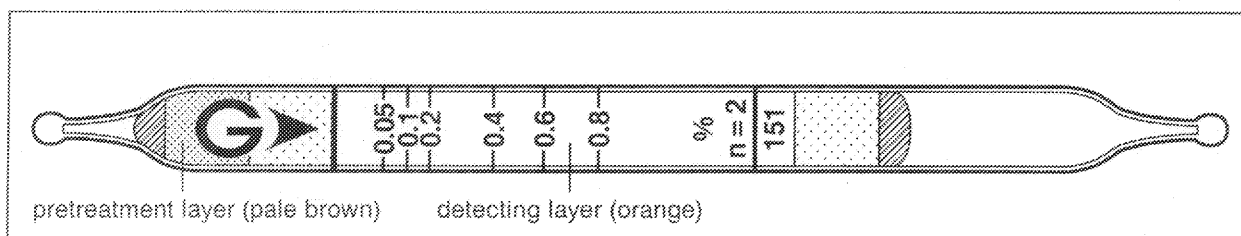


Acetone CH_3COCH_3

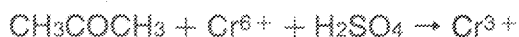
No.151



Performance

Measuring range	0.05 to 0.8 %	0.8 to 2 %
Number of pump strokes	2 (200 ml)	1 (100 ml)
Correction factor	1	2.5
Sampling time	4 min	2 min
Detecting limit :	0.003 % (2 pump strokes)	
Colour change :	Orange → Dark green	
Corrections for temperature & humidity :	Temperature correction is necessary.	
Relative standard deviation :	10 % (for 0.05 to 0.2 %), 5 % (for 0.2 to 0.8 %)	
Shelf life :	3 years	

Reaction principle



Possible coexisting substances and their interferences (NOTE : Page 2-5)

Substance	Concentration	Interference	Changes colour by itself to
Propane	≧ 0.2%	+	Dark green (whole layer)
Aromatic hydrocarbone	≧ 500 ppm	+	
Hydrogen sulphide	≧ 500 ppm	+	Dark green
Alcohols, Esters, Ketones		+	
Sulphur dioxide	≧ 500 ppm	+	Green

Water vapour is trapped in the pretreatment (pale brown) layer.

Other substance measurable with this detector tube

Substance	Correction	No. of pump strokes	Measuring range
Cyclohexene	Factor : 1.0	1	0.05 to 0.8%

Calibration gas generation

Static gas dilution method